



Universidad
de Jaén

Escuela Politécnica Superior
de Linares



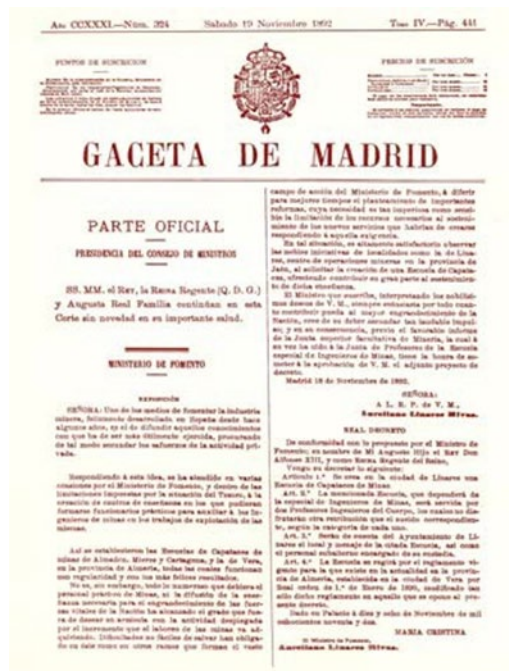
HISTORY OF LINARES HIGHER POLYTECHNIC SCHOOL

Linares Higher Polytechnic School, recipient of the Medal of Andalusia, is the product of a merger in 1976 between two emblematic schools in Linares: the Mining School and the Industrial School. These schools had played an important role in providing technical and cultural education in the city for many years; following the merger, the range of academic programmes on offer was extended to include courses on Telecommunications and Civil Engineering.

LINARES MINING SCHOOL

HISTORICAL BACKGROUND

Linares Mining School was created by Royal Decree on 18 November 1892, following a proposal by the Minister for Internal Development, Aureliano Linares Rivas, to provide training for mine foremen and furnace melters at a site supplied by Linares City Council, which covered the school's maintenance costs.



Madrid Gazette, then known as BOE, published the Royal Decree



**Universidad
de Jaén**

Escuela Politécnica Superior
de Linares



Teaching was delivered by engineers from the Mining Corps, the most senior of whom was appointed as deputy director, while the position of director was held by the Director of the Special School for Mining Engineers in Madrid.

The first deputy director during the 1893-94 academic year was Manuel Rey Pontes. He was succeeded the following year by Cecilio López Montes, who successfully consolidated mining studies in the city.

The school's name was changed to the School of Technical Assistants for Mines and Metallurgical Plants by Royal Decree on 30 November 1914, prompting an expansion of the subjects studied.

It was renamed again under the Royal Decree of 17 July 1925, when it came to be known as the School of Technical Foremen for Mines and Metallurgical Plants, and under the Ministerial Order of 29 November 1951, which transformed it into the School of Technicians for Mines and Metallurgical and Metallurgical Plants. The programmes and different levels on offer were extended and the school was classified as an Intermediate Technical Training School.

In October 1960, new legislation was brought in and the school was renamed the Industrial School for Mines and Metallurgical and Metallurgical Plants. Its study programmes were standardised to match those offered by all other Intermediate Training Schools. Two specialisations were assigned to the school: Mining and Electrical Installations in Mines and Plants.



**Universidad
de Jaén**

Escuela Politécnica Superior
de Linares



Under the Law on the Reorganisation of Technical Education, the institution was renamed the School of Mining Technical Engineering on 1 October 1965. Teaching was centred on the specialisations of Mining Exploitation and Metallurgy.

In 1972, via Decree 1377/1972 of 10 May, the school was incorporated into the University of Granada and renamed the University School of Mining Technical Engineering. It began to deliver degree programmes in the specialisations that were already on offer.

LOCATION

Throughout its history, the Mining School occupied a number of different locations. It was originally founded at the former San Juan de Dios Hospital. The old hospital building was damaged by the earthquake that hit the city in 1951 and the school was provisionally transferred to what is now Jaén Nursery and Primary School and the former Casa de Socorro.

Given the growing numbers of students and the inadequate size of these temporary premises, the school's director applied for permission from the Ministry of National Education to construct a new building on land donated by the City Council on Calle Sagunto in 1957. Teaching began in the new building on 6 August 1959. In 1973, an adjoining building was constructed to meet the school's expanding needs.



Universidad
de Jaén

Escuela Politécnica Superior
de Linares



The first premises of the Mining School. Image from the 1920s.



Universidad
de Jaén

Escuela Politécnica Superior
de Linares



The Mining School at the building constructed in the late 1950s. Image from 1960.



The former Mining School building (2010)



Universidad
de Jaén

Escuela Politécnica Superior
de Linares



LINARES INDUSTRIAL SCHOOL

HISTORICAL BACKGROUND

Linares Higher School of Industrial Arts was founded by Royal Decree on 16 July 1910 and was located in the old Zambrana Palace donated by the City Council, which was the owner at the time.

This Royal Decree was the product of a lengthy process involving local industry and mining representatives that was led by the City Council, which was chaired at that time by José María Yanguas Jiménez. The process was facilitated by precious support from Julio Burell y Cuéllar, then Minister of Public Instruction and Fine Art.



The official state gazette containing the Royal Decree by which Linares Industrial School was founded.



Universidad
de Jaén

Escuela Politécnica Superior
de Linares



Julio Burell y Cuéllar



José María Yanguas Jiménez



**Universidad
de Jaén**

Escuela Politécnica Superior
de Linares



On 16 October 1910, Linares Higher School of Industrial Arts was inaugurated with a ceremony attended by all members of the municipal council. Enrique Bautista Arista was appointed headteacher.

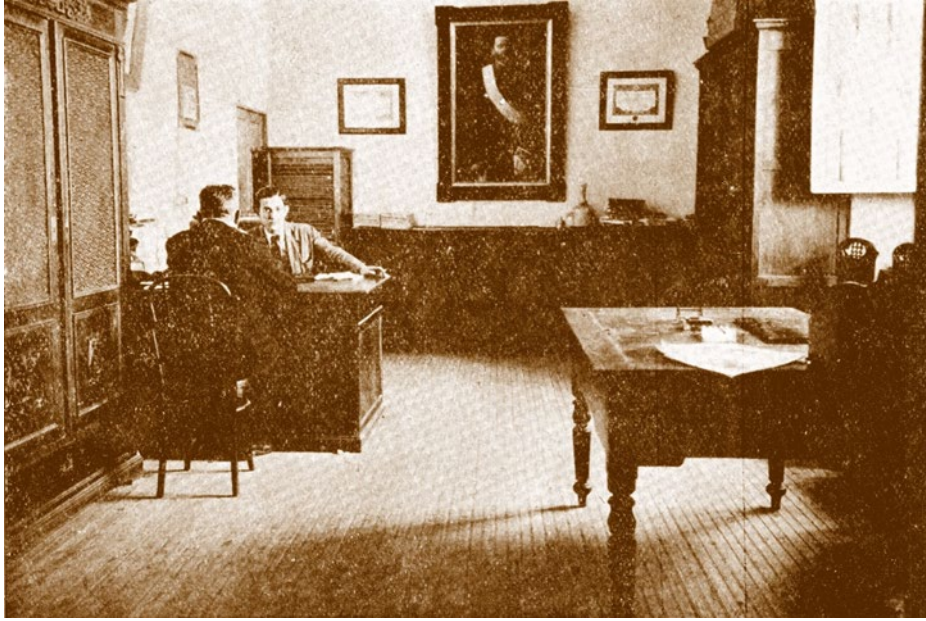


The Industrial School's first teaching staff in 1910.



Universidad
de Jaén

Escuela Politécnica Superior
de Linares



Secretariat

Under the Organic Law on Industrial Schools of 16 December 1910, the school was reclassified as an Industrial School, offering courses in Mechanics, Chemistry, Electricity and Surveying.

The Decree of 22 July 1942 changed the school's name again: the new School of Industrial Technicians offered specialisations in Electricity and Mechanics.

Under the Law on the Reorganisation of Technical Education, the institution was renamed the School of Industrial Technical Engineering on 1 October 1965. Teaching was centred on the specialisations of Electricity and Mechanics.

In 1972, via Decree 1377/1972 of 10 May, the school was incorporated into the University of Granada and renamed the University School of Industrial Technical Engineering. In the 1972/73 academic year, it began to deliver degree programmes in the specialisations that were already on offer.



**Universidad
de Jaén**

Escuela Politécnica Superior
de Linares



Stained glass window displaying the shield of the University of Granada, which stood in the main lobby of Linares Industrial School until 1993.

LOCATION

From its creation until 1940, Linares Higher School of Industrial Arts was located in the Zambrana Palace.

In 1940, it moved to a building known as 'the Englishman's palace' at the intersection between Calle Daoíz and Calle Santa Engracia, although the school quickly outgrew the building as student numbers rose. The decision was taken to construct a new building in Calle Sagunto, which was completed in 1949.



Universidad
de Jaén

Escuela Politécnica Superior
de Linares



Image of Zambrana Palace today



Image of the 'Englishman's palace', which is no longer standing



Universidad
de Jaén

Escuela Politécnica Superior
de Linares



Image of construction works on the building in Calle Sagunto/Calle Alfonso X el Sabio



Image of construction works on the building in Calle Sagunto/Calle Alfonso X el Sabio

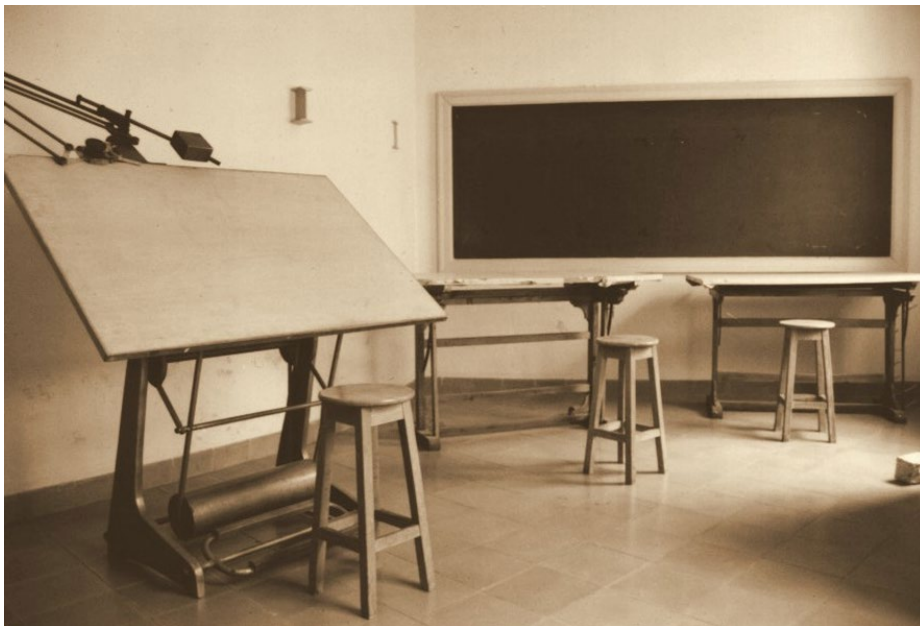


Universidad
de Jaén

Escuela Politécnica Superior
de Linares



Image of the building in Calle Sagunto/Calle Alfonso X el Sabio in 2010



Inside a classroom, 1950s



Universidad
de Jaén

Escuela Politécnica Superior
de Linares



The school library, 1970s



Meeting room, 1970s



**Universidad
de Jaén**

Escuela Politécnica Superior
de Linares



LINARES POLYTECHNIC UNIVERSITY SCHOOL

The Royal Decree of 18 June 1976 formalised the merger between the University Schools of Mining Technical Engineering and Industrial Technical Engineering to create Linares Polytechnic University School. The decree expanded the study programmes available at the school, adding another two specialisations, one industrial and one in mining, which were taught alongside Technical Engineering courses in: Electricity, Mechanics, Mining Exploitation, Metallurgy, Industrial Chemistry, and Mine Surveying and Prospecting.



The buildings comprising the Polytechnic University School following the 1976 merger

Law 5/1993 of 1 July 1993 created the University of Jaén and Linares Polytechnic University School, by then 100 years old, became part of the university. Two new courses in high demand in modern-day society were added to the list of study programmes at the school: Technical Engineering in Telecommunications in the Telematics specialisation, which began in 1993/94, and Technical Engineering in Mines in the Energy, Fuel & Explosive Resources specialisation, which began in 1994/95.



Universidad
de Jaén

Escuela Politécnica Superior
de Linares



Stained glass window showing the University of Jaén shield

LINARES HIGHER POLYTECHNIC SCHOOL

On 15 July 2005, according to the [Official Gazette of the Andalusian Regional Government](#), the Polytechnic University School was renamed Linares Higher Polytechnic School (EPSL) after the second cycle Telecommunications Engineering courses were added to the list of study programmes available at the school.

In 2010-2011, Linares Higher Polytechnic School expanded its catalogue of programmes again, adapting to the [European Higher Education Area \(EHEA\)](#). In July 2010, the National Quality Evaluation Agency (ANECA) approved the Bachelor's degrees that were added to the school's study programme. Since then, the school has offered Bachelor's degree programmes in Civil Engineering and in Telecommunications Technology Engineering alongside the new degree programmes replacing the former technical engineering qualifications. Subsequently, the second



**Universidad
de Jaén**

Escuela Politécnica Superior
de Linares



cycle Telecommunications Engineering programmes were adapted to create the current Master's Degree in Telecommunications Engineering. The catalogue of postgraduate programmes on offer was supplemented by Master's degree programmes in Land Transport and Logistics Engineering, Materials Engineering and Sustainable Construction, Mining Engineering and Connected Industry.

Since September 2015, the school has operated from the [Science & Technology Campus in Linares](#). This innovative facility features spaces for educational, professional and occupational activities, as well as for [R+D+I](#). The campus features four main buildings with a modern, avant-garde design.

The catalogue of programmes currently on offer at EPSL includes eight undergraduate programmes, five master's programmes (two of which provide access to regulated professions) and a doctoral programme.

Undergraduate programmes

- Mining/Civil Engineering branch:
 - Bachelor's Degree in Civil Engineering (with the option of an [International Double Bachelor's Degree in Civil Engineering at EPS Linares and HTWK Leipzig](#)).
 - Bachelor's Degree in Mining Technology Engineering (with specialisations in Mine Exploitation, Surveying and Prospecting).
 - Bachelor's Degree in Energy Resource Engineering
 - Joint Programme (PCEO) in Civil Engineering and Mining Technology Engineering, with three options:
 - Civil Engineering and Mining Technology Engineering, specialising in Mine Exploitation.
 - Civil Engineering and Mining Technology Engineering, specialising in Mine Surveying and Prospecting.



**Universidad
de Jaén**

Escuela Politécnica Superior
de Linares



- Civil Engineering and Mining Technology Engineering, specialising in both Mine Exploitation and Mine Surveying and Prospecting.
- Joint Programme (PCEO) in Energy Resource Engineering and Industrial Chemical Engineering.
- Industrial branch:
 - Bachelor's Degree in Electrical Engineering.
 - Bachelor's Degree in Mechanical Engineering (with the option of a [Double Degree in Mechanical Engineering at the University of Jaén and Schmalkalden University of Applied Sciences](#)).
 - Bachelor's Degree in Industrial Chemical Engineering.
 - Joint Programme (PCEO) in Mechanical Engineering and Electrical Engineering.
- Telecommunications branch:
 - Bachelor's Degree in Telecommunications Technology (specialising in Telecommunications Systems and Sound and Image).
 - Bachelor's Degree in Telematics Engineering.
 - Joint Programme (PCEO) in Telecommunications Technology Engineering and Telematics Engineering.

Master's degree programmes providing access to regulated professions:

- Master's Degree in Telecommunications Engineering, taught bilingually, providing access to the regulation profession of Telecommunications Engineer. Students have the option to study the programme as an [International Double Master's Degree in Telecommunications at EP SL and Technische Hochschule de Mittelhessen \(THM\)](#).



**Universidad
de Jaén**

Escuela Politécnica Superior
de Linares



- Inter-University Master's Degree in Mining Engineering, providing access to the regulated profession of Mining Engineer.

Master's degree programmes:

- Master's Degree in Land Transport and Logistics Engineering.
- Master's Degree in Materials Engineering and Sustainable Construction
- Master's Degree in Connected Industry.

Doctoral programme :

- Advances in Materials Engineering and Sustainable Energy

Linares Higher Polytechnic School (EPSL) is located in the county of Linares and works toward continuous improvement, paying particular attention to its environment and to contemporary issues. This 100-year-old institution maintains strong ties to the society that it serves, supporting and encouraging its development. The school also works closely with the business sector and adopts an entrepreneurial approach to many of its activities. It is committed not only to training professionals, but also to providing support and encouragement for students' personal development.

LINARES SCIENCE & TECHNOLOGY CAMPUS

To meet the requirements of the new European Higher Education Area (EHEA), institutions must provide high-quality, discrete facilities for teaching, research and other university activities, which offer students a well-rounded education, enhance their employability and allow research findings to be transferred to the productive sector. With this in mind, EP SL and Linares City Council identified the need for a new university campus to fulfil these requirements in 2004.



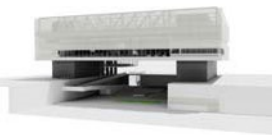
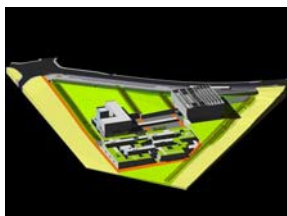
Universidad
de Jaén

Escuela Politécnica Superior
de Linares



The first stone is laid at Linares Science & Technology Campus

On 3 February 2006, a consortium was created, comprising the Department of Innovation, Science and Business, the Department of Labour and the Department of Education at the Andalusian Regional Government, the University of Jaén and Linares City Council. A framework agreement was signed to approve the construction of Linares Science & Technology Campus (CCTL).



On 10 July 2007, the Linares Science & Technology Campus Foundation was founded, made up of the signatories to the collaboration framework agreement signed on 3 February 2006. On 15



**Universidad
de Jaén**

Escuela Politécnica Superior
de Linares



November 2008, a ceremony was held to mark the start of construction work at CCTL and the laying of the first stone.

CCTL is located to the south-west of the urban area of Linares, and is bounded to the south by Avenida de la Universidad and to the north by the N-322 national road and the Linares/Albacete A-32 motorway. The campus comprises the following buildings:

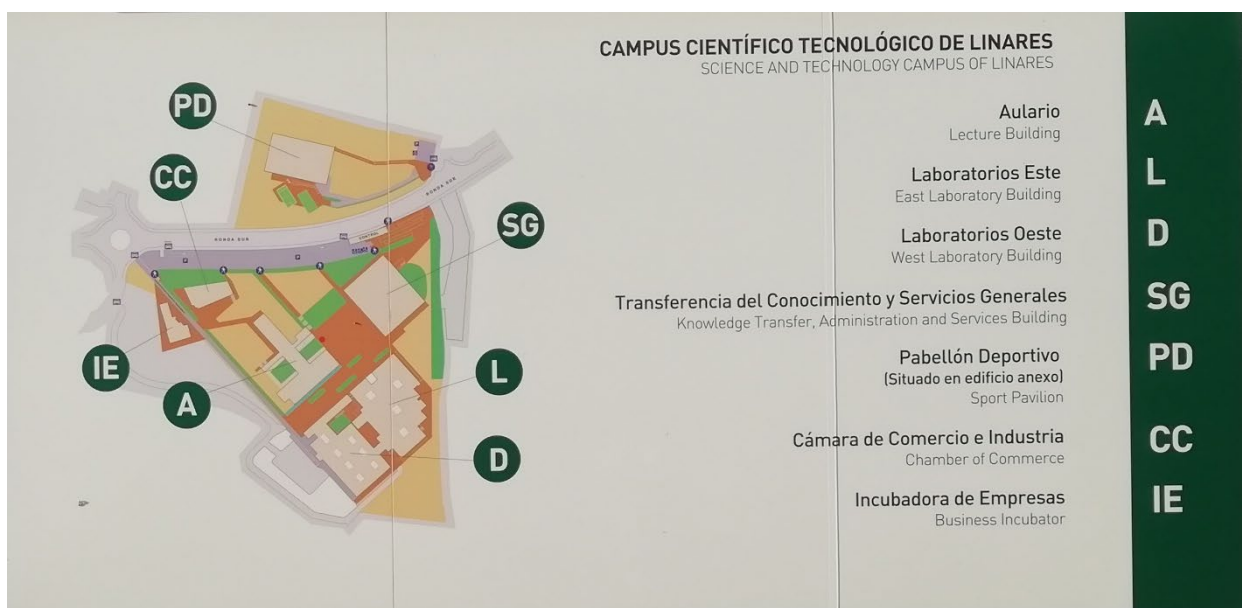
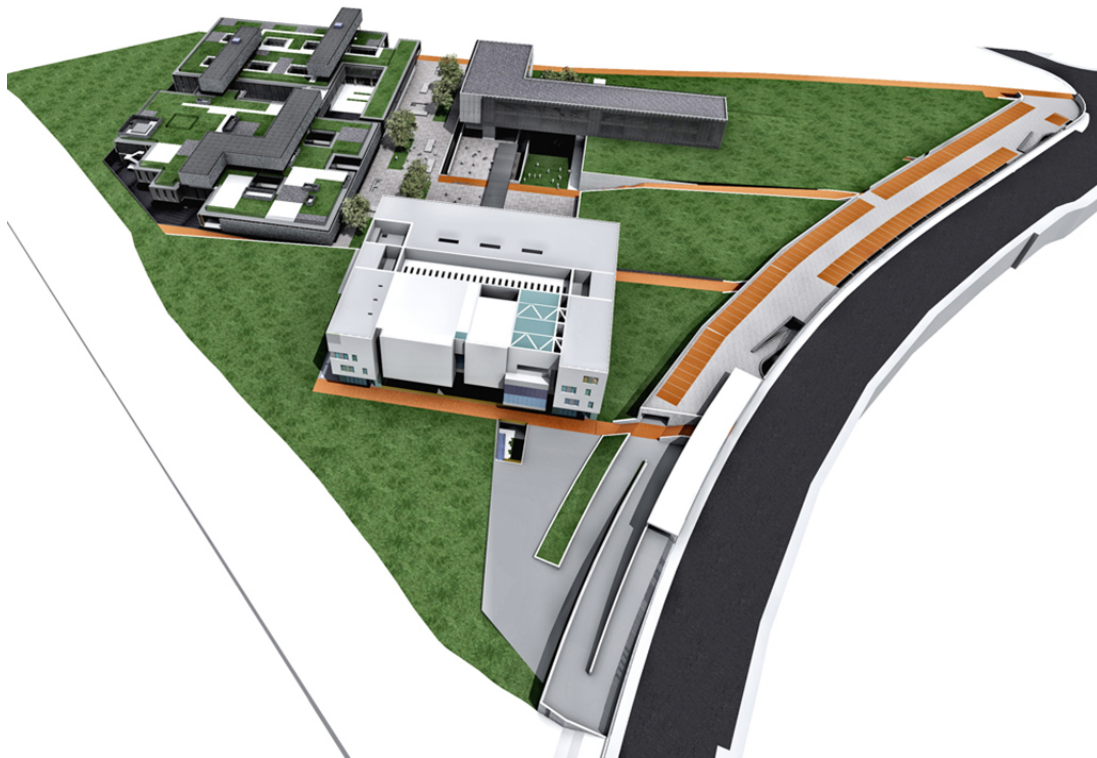
- **R+D Laboratory Complex:** the complex is made up of two modules (east and west), which are joined by connecting footbridges. The East module (Laboratory Building) houses different types of laboratories and occupies a built-up area of 74,721.2m², used for teaching and research. Meanwhile, the West module (Department Building) covers 5,279.8m² and contains seminar rooms and offices.
- **General Services Building and Library:** the main building on the campus, with a built area estimated at 6,500 m². It contains an assembly hall, conference room, meeting rooms, library, canteen, café, management and administration areas, rooms for student associations, security facilities, maintenance, etc.
- **Teaching Building:** this building houses the university's teaching, professional and occupational activities, with a capacity of around 2,000 students. The built area of the building is estimated at 5,000m².

Linares Higher Polytechnic School transferred to Linares Science & Technology Campus in summer 2015, starting the 2016-17 academic year on its new premises.



Universidad
de Jaén

Escuela Politécnica Superior
de Linares





Universidad
de Jaén

Escuela Politécnica Superior
de Linares



Linares Science & Technology Campus. Knowledge Transfer and General Services Building.



Linares Science & Technology Campus. Knowledge Transfer and General Services Buildings, Laboratory Building, Department Building and Teaching Building.



**Universidad
de Jaén**

Escuela Politécnica Superior
de Linares



Linares Science & Technology Campus. Teaching Building.



Universidad
de Jaén

Escuela Politécnica Superior
de Linares



AWARDS

In 1979, Linares City Council awarded the city's Gold Medal to Linares Polytechnic University School.



The Polytechnic University School is awarded the Gold Medal of Linares.

Under Decree 94/1996 of 23 February (BOJA, 7 March 1996) and “in acknowledgement of the work that the centre has been conducting for more than 100 years to train technicians who bring prestige to our institution from all over Spain”, the Andalusian Regional Government awarded the school the Medal of Andalusia.



**Universidad
de Jaén**

Escuela Politécnica Superior
de Linares



The Medal of Andalusia, awarded to Linares Higher Polytechnic School in 1996.

In 1999, Casa de Jaén in Granada awarded Linares Polytechnic University School with a medal for its educational work.

In 2000, Ideal newspaper awarded the IDEAL 2000 award to Linares Polytechnic University School.

In 2010, coinciding with the Centenary of Industrial Education at EPS Linares, the Chamber of Commerce of Linares awarded the Special Jury Prize to the school's industrial training programmes as part of the Chamber Awards.